

## Snellville Townhome Site

### Property Summary

Location: Highway 78 Near McGee Road in the City of Snellville

Size: 8.932 Acres

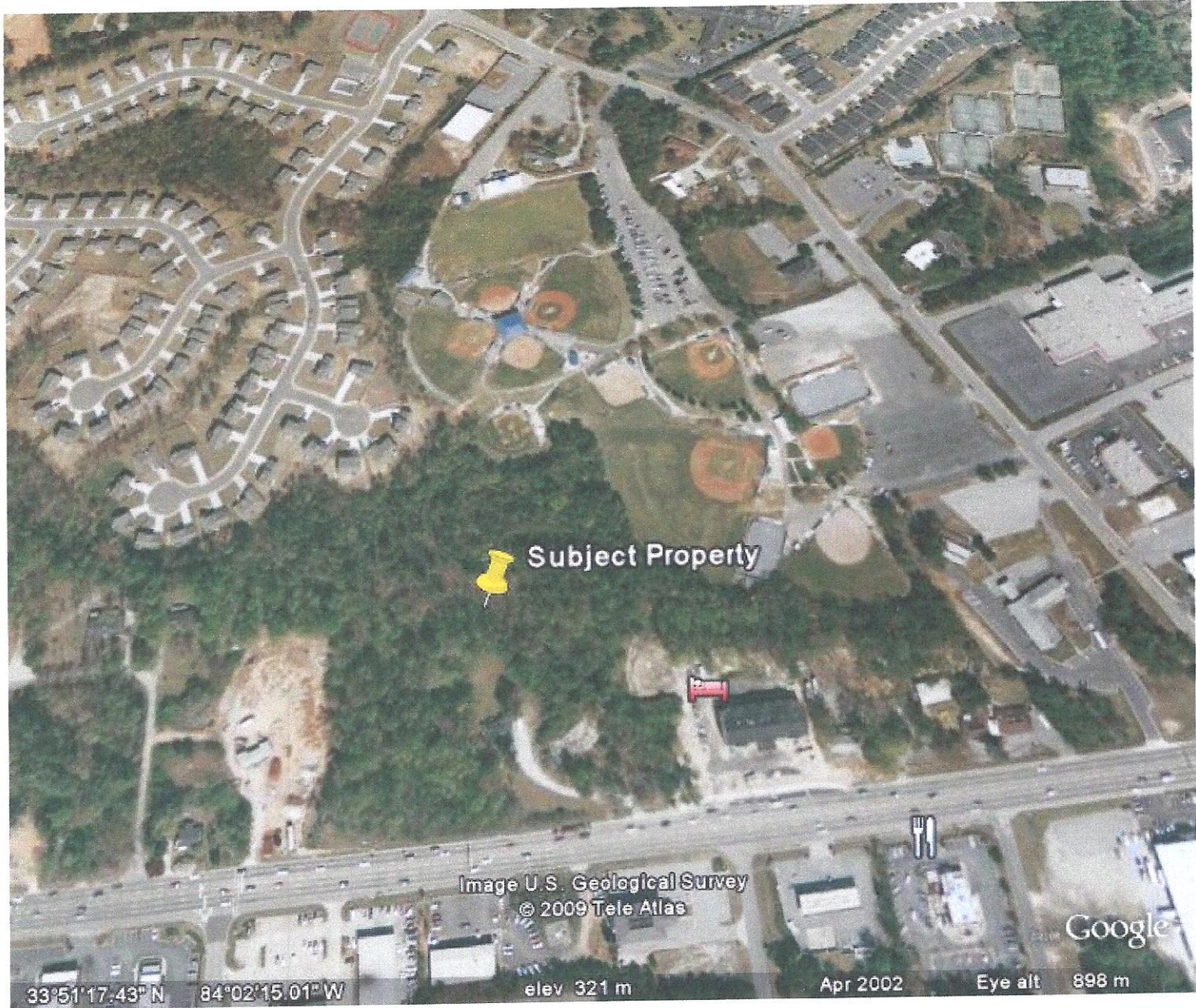
Frontage: Highway 78 / Main Street

Comments: Adjacent to and Contiguous to South Gwinnett Park

Exclusively Presented by:

J. William Butler  
JWB Realty Services, LLC.  
3400 Rivergreen Court  
Suite 500  
Duluth, Georgia 30096  
770.622.3050 Office  
770.622.9590 Fax  
[www.jwbrealty.com](http://www.jwbrealty.com)





Subject Property

Image U.S. Geological Survey  
© 2009 Tele Atlas

33°51'17.43" N 84°02'15.01" W

elev 321 m

Apr 2002

Eye alt 898 m

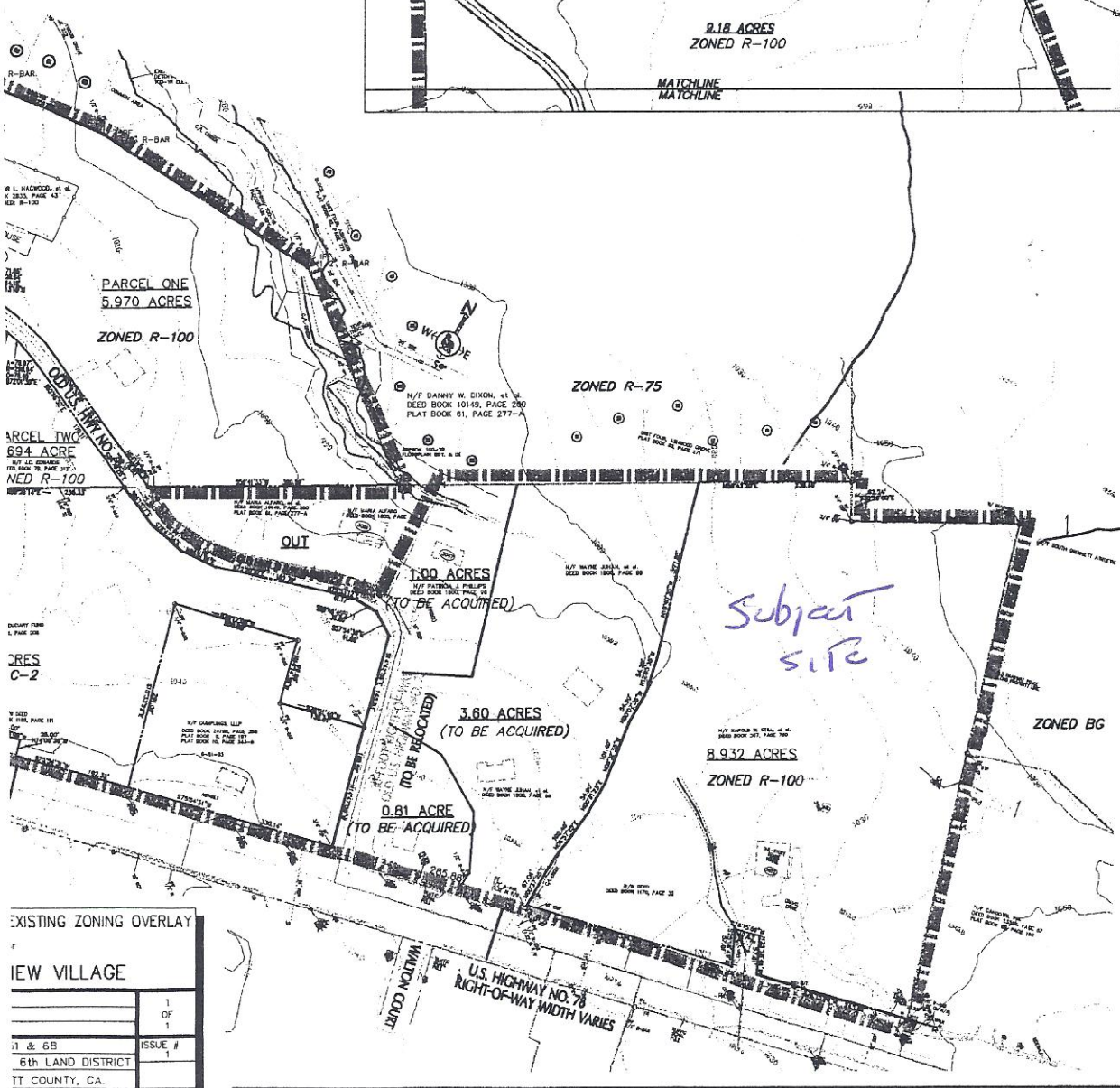
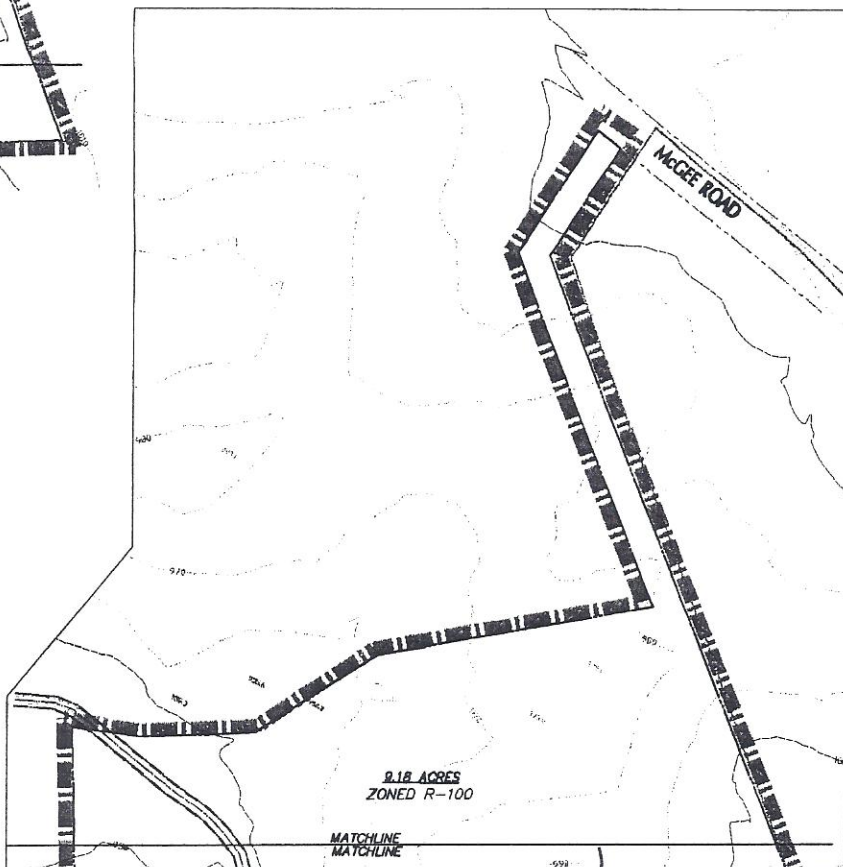
Google

5.18 ACRES  
ZONED R-100

MATCHLINE  
MATCHLINE

LINE	LENGTH	BEARING
L1	170.11	S65°46'52"E
L2	99.31	N64°18'28"W
L3	73.80	N64°18'17"W
L4	61.74	S78°47'34"E
L5	55.50	N85°51'01"E
L6	178.16	S65°46'32"E
L7	78.80	N64°18'28"W
L8	34.23	N77°10'45"E
L9	41.17	N75°53'18"E
L10	36.60	S89°44'45"E
L11	41.69	S57°54'30"E
L12	48.00	S75°54'31"W
L14	25.00	S14°05'29"E
L15	85.00	N14°05'29"W
L16	75.00	S45°34'06"E
L17	48.31	S43°07'59"W
L18	72.00	S45°34'06"E
L19	81.26	N48°24'27"W
L20	32.89	S41°31'40"W

CURVE TABLE
CURVE LENGTH RADIUS
CC 271.85 328.74



EXISTING ZONING OVERLAY	
	1
	OF
	1
1 & 6B	ISSUE #
6th LAND DISTRICT	1
TT COUNTY, CA	