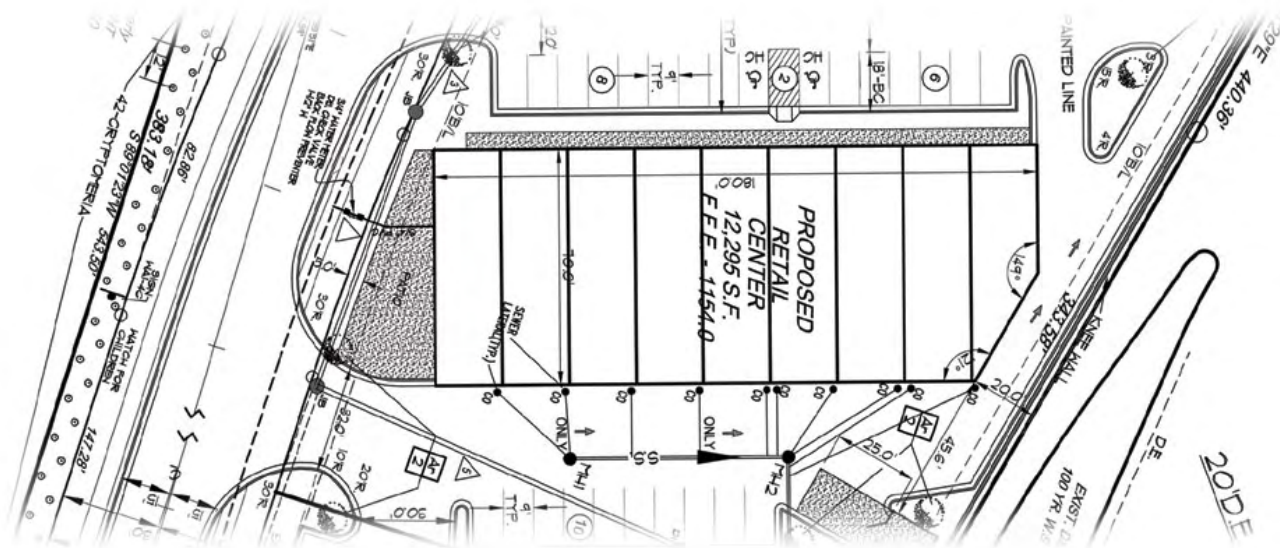


the shoppes at Rosewood Park

Now Preleasing



- Location:** Highway 9 (Alpharetta Highway)
Corner of Hwy. 9 and Crested Moss Drive
Just north of McFarland Road
Alpharetta, GA 30004
- Size:** 12,295 Square Feet
- Suite Sizes:** 1,400 – 4,200 sf
Can be combined together for more square feet
Please refer to enclosed floor plans
- Price:** \$18 per Square Foot/NNN
CAM: \$3.00 - \$3.25

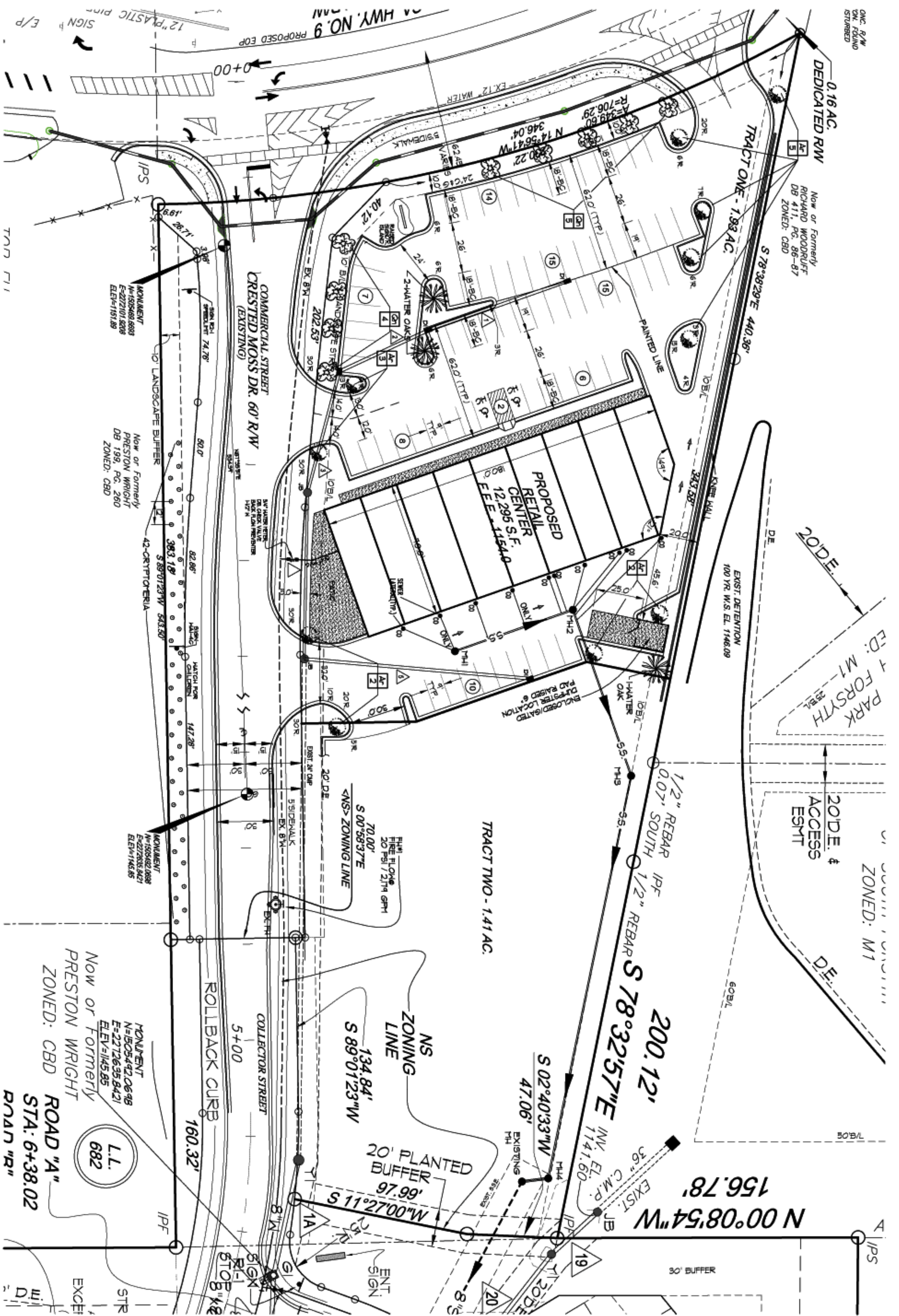
Please contact Chris Massey or Ryan Denbow for additional information

770.622.3050

JWB
Realty Services, LLC

3400 Rivergreen Court, Suite 500, Duluth, GA 30096 Phone: 770.622.3050 Fax: 770.622.9590

The information contained herein obtained from a source deemed reliable. JWB Realty has no reason to doubt its accuracy, however we do not guarantee it. JWB Realty Services, LLC is acting as Agent for, and is being compensated by the Owner of this property, and is not acting as Agent for the prospective tenant.



MONUMENT
 N=1505492.0648
 E=2172635.8421
 ELEV=145.85

Now or Formerly
 PRESTON WRIGHT
 ZONED: CBD

ROAD "A"
 STA: 6+38.02
 ROAD "R"

L.L.
 682

Pop-Facts: Household Quick Facts Report

Prepared For:
Project Code:

Order #: 963970032
Site: 01

Trade Area: HIGHWAY 9 N AT MCFARLAND RD, ALPHARETTA, GA 30004, aggregate

Trade Area: HIGHWAY 9 N AT MCFARLAND RD, ALPHARETTA, GA 30004, aggregate

Trade Area: HIGHWAY 9 N AT MCFARLAND RD, ALPHARETTA, GA 30004, aggregate

Description	0.00 - 1.00 miles		0.00 - 3.00 miles		0.00 - 5.00 miles	
	Radius	%	Radius	%	Radius	%
Households						
2010 Projection	572		9,823		28,105	
2005 Estimate	452		7,788		23,746	
2000 Census	330		5,725		19,355	
1990 Census	147		1,823		6,976	
Growth 2005 - 2010	26.55%		26.13%		18.36%	
Growth 2000 - 2005	36.97%		36.03%		22.69%	
Growth 1990 - 2000	124.49%		214.04%		177.45%	
2005 Est. Households by Household Income						
Income Less than \$15,000	20	4.42	288	3.70	830	3.50
Income \$15,000 - \$24,999	20	4.42	257	3.30	804	3.39
Income \$25,000 - \$34,999	19	4.20	361	4.64	1,160	4.89
Income \$35,000 - \$49,999	33	7.30	694	8.91	2,013	8.48
Income \$50,000 - \$74,999	70	15.49	1,168	15.00	3,691	15.54
Income \$75,000 - \$99,999	70	15.49	1,198	15.38	3,564	15.01
Income \$100,000 - \$149,999	110	24.34	1,882	24.17	5,599	23.58
Income \$150,000 - \$249,999	78	17.26	1,390	17.85	4,192	17.65
Income \$250,000 - \$499,999	23	5.09	412	5.29	1,398	5.89
Income \$500,000 or more	8	1.77	139	1.78	495	2.08
2005 Est. Average Household Income						
	\$121,191		\$122,324		\$125,133	
2005 Est. Median Household Income						
	\$97,535		\$98,499		\$98,671	
2005 Est. Per Capita Income						
	\$40,213		\$44,028		\$45,585	
2005 Est. Households by Household Type						
Family Households	371	82.08	6,002	77.07	18,007	75.83
Nonfamily Households	81	17.92	1,786	22.93	5,739	24.17
2005 Est. Group Quarters Population						
	0		6		70	
2005 Est. Households by Household Size*						
1-person household	58	12.83	1,395	17.91	4,476	18.85
2-person household	145	32.08	2,603	33.42	7,909	33.31
3-person household	91	20.13	1,461	18.76	4,346	18.30
4-person household	90	19.91	1,426	18.31	4,412	18.58
5-person household	45	9.96	619	7.95	1,818	7.66
6-person household	14	3.10	184	2.36	540	2.27
7 or more person household	9	1.99	101	1.30	246	1.04
2005 Est. Average Household Size						
	3.02		2.79		2.75	



Pop-Facts: Household Quick Facts Report

Prepared For:
Project Code:

Order #: 963970032
Site: 01

Trade Area: HIGHWAY 9 N AT MCFARLAND RD, ALPHARETTA, GA 30004, aggregate

Trade Area: HIGHWAY 9 N AT MCFARLAND RD, ALPHARETTA, GA 30004, aggregate

Trade Area: HIGHWAY 9 N AT MCFARLAND RD, ALPHARETTA, GA 30004, aggregate

Description	0.00 - 1.00 miles		0.00 - 3.00 miles		0.00 - 5.00 miles	
	Radius	%	Radius	%	Radius	%
2005 Est. Household Type, Presence Own Children*	452		7,788		23,746	
Single Male Householder	29	6.42	647	8.31	1,937	8.16
Single Female Householder	30	6.64	748	9.60	2,539	10.69
Married-Couple Family, own children	181	40.04	2,854	36.65	8,625	36.32
Married-Couple Family, no own children	154	34.07	2,556	32.82	7,433	31.30
Male Householder, own children	6	1.33	78	1.00	264	1.11
Male Householder, no own children	6	1.33	90	1.16	286	1.20
Female Householder, own children	13	2.88	251	3.22	813	3.42
Female Householder, no own children	12	2.65	175	2.25	585	2.46
Nonfamily, Male Householder	15	3.32	242	3.11	759	3.20
Nonfamily, Female Householder	8	1.77	149	1.91	504	2.12

*In contrast to Claritas Demographic Estimates, "smoothed" data items are Census 2000 tables made consistent with current year estimated and 5 year projected base counts.

